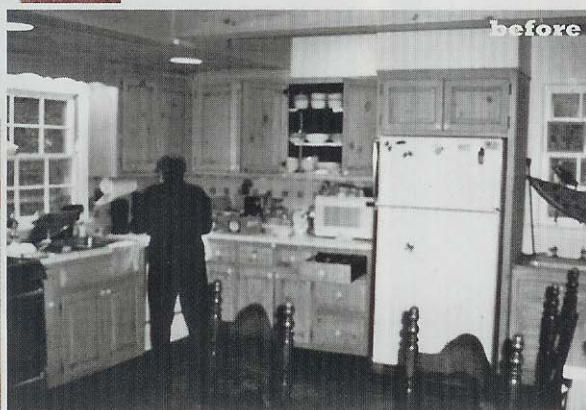


# spatial solutions

A clever redesign proves that bigger is not always better

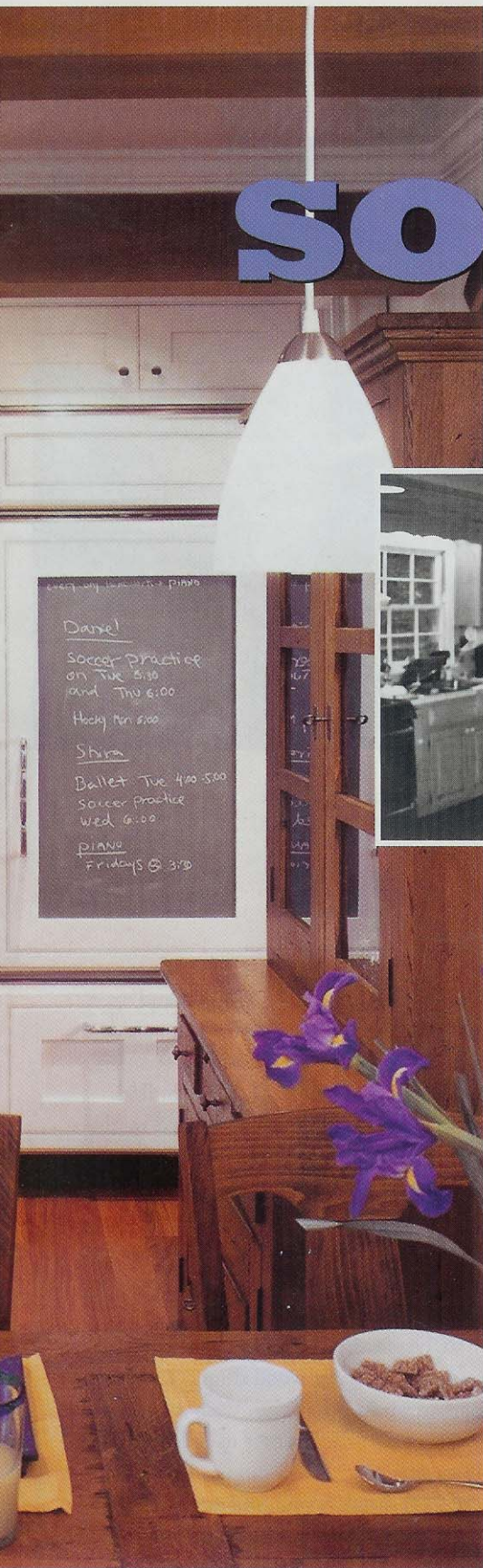


The old kitchen featured dark wood cabinets and a rough terra-cotta tile floor. Its awkward layout made it difficult for multiple cooks to share the space.

**Jacob and Ayelet Kindler's suburban New Jersey kitchen** had all the ingredients of a room desperate for a makeover. Measuring 250 square feet, it had minimal counter space, an awkward appliance layout and dark wood floor-to-ceiling cabinets. "Ayelet and I love to cook, but it was very difficult for both of us to use the room at the same time," says Jacob.

After living in their 1920s, Tudor-style house for a year, Jacob, a kitchen designer and owner of Home Solutions, by D.S.K. Group, a New York City-based remodeling firm, came up with a plan for a more efficient and attractive kitchen; and he did it by minimally altering the layout within the existing footprint. "Many people automatically assume that bigger is better," says Jacob. "But after designing hundreds of kitchens—all 100 square feet or less—I'm inclined to disagree. Too much space can be just as hindering as too little, it encourages you to collect things that you don't need."

With that in mind, the room was gutted and rebuilt. Dark wood cabinets were replaced with custom, white-painted units that offer a mix of open and closed storage. "One of the goals was to have the new kitchen tie in architecturally to the rest of the house," says Jacob. "To do this, I replicated 1920s design elements, including cutouts at the base of the cabinets and an Art Deco-style range hood." ▶

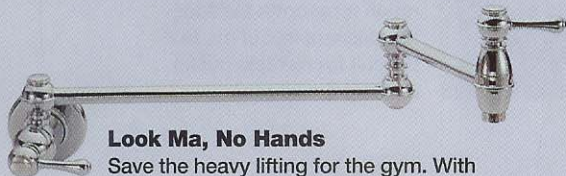


## finishing touches



### Farm Charm

Get the Kindler kitchen's rustic look with Porcher's London 30-inch single-bowl farm sink. \$995. 800-442-1902; [www.americanstandard-us.com](http://www.americanstandard-us.com).



### Look Ma, No Hands

Save the heavy lifting for the gym. With the Danze Opulence Pot Filler, you can fill your pasta pot directly on the stove, eliminating the trip from sink to stove. Available in three finishes (shown in chrome). Starts at \$300. [www.danze.com](http://www.danze.com).



### Natural Beauty

The warm, rich tones and color variations in Alloc's Merbau hardwood floor offer a great contrast to white cabinets. \$5 per square foot. 877-362-5562; [www.alloc.com](http://www.alloc.com).



**ABOVE:** To make the small kitchen user friendly to multiple cooks, Jacob redesigned the space once containing a washer and dryer to create a small island-style prep center.

The combination of glass doors on the upper cabinets and open shelving helps to visually expand the space. A second window, added over the sink, brings in additional natural light. The new counters, walls and backsplash areas are made of white 12x12-inch tiles.

The range was moved to a position formerly occupied by the refrigerator, which was placed further down the wall. The dishwasher and the refrigerator, a fully integrated model fitted with a chalkboard panel, are designed to blend-in with the cabinetry.

Jacob also relocated the washer and dryer from an area by the back door to a room off the kitchen, then used the space to construct a walk-in pantry and an islandlike prep area.

Finally, to add warmth to the space, Jacob replaced the old terracotta floor tiles with wood and added a wood dining table and storage cabinet. Making use of an otherwise "dead space," he added several shelves at one end of the counter to hold Ayelet's collection of vintage rolling pins.

The new space has a small yet simple layout, still measuring 250 square feet, that successfully consolidates cooking and prep areas with lots of room for guest and cooks to move around. ■



## SMALL-SPACE TIP

To make a small kitchen look larger, use the same material or colors on the cabinets and counters.

**ABOVE:** Natural light pours in through the two new windows and reflects off the white surfaces of the painted wood cabinets, tile wall treatment and marble counters, giving the formerly cramped kitchen a bright, spacious appearance.

**RIGHT:** The new layout required surprisingly few structural changes. Jacob made the room more efficient by shifting appliances around and placing the island and prep sink on a separate wall.

